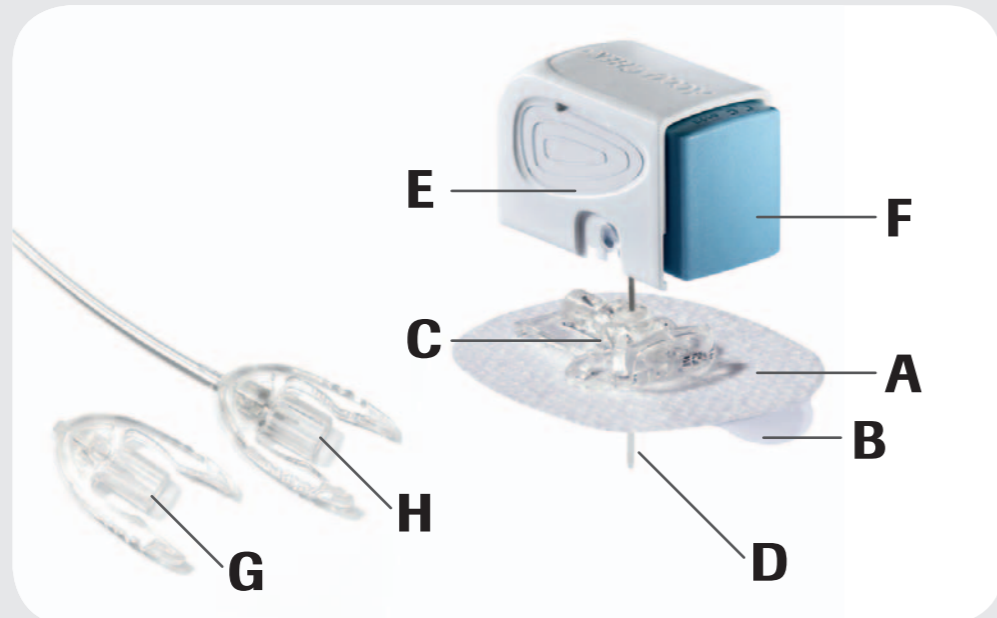




Accu-Chek® Insight Flex Training Chart

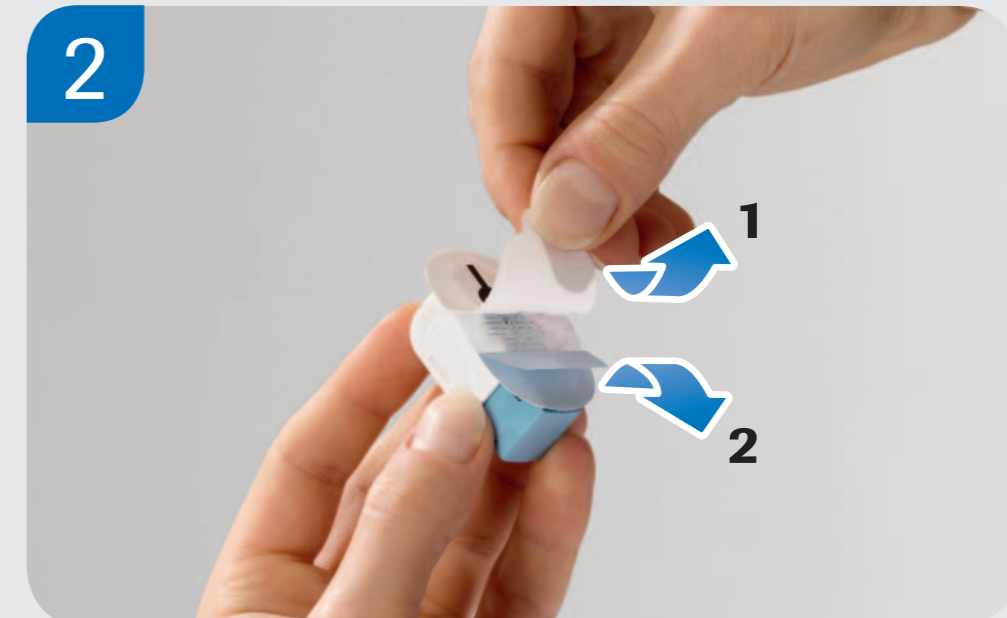
The Accu-Chek Insight Flex infusion set is intended for the subcutaneous infusion of insulin with an Accu-Chek Insight insulin pump.



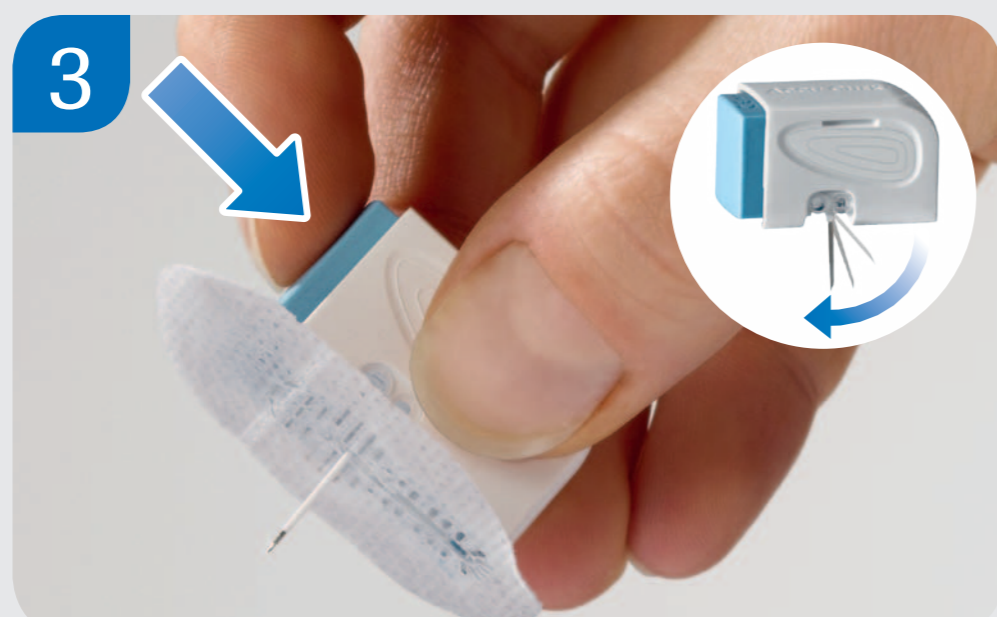
- A** Adhesive plaster **E** Needle box
- B** Adhesive liner **F** Button
- C** Connector plate **G** Disconnect cover
- D** Introducer needle **H** Transfer set (tubing)



1 Before unpacking your infusion set, wash your hands thoroughly. Choose and disinfect your infusion site as instructed by your doctor or healthcare team.



2 Peel both parts of the adhesive liner away from the adhesive plaster.



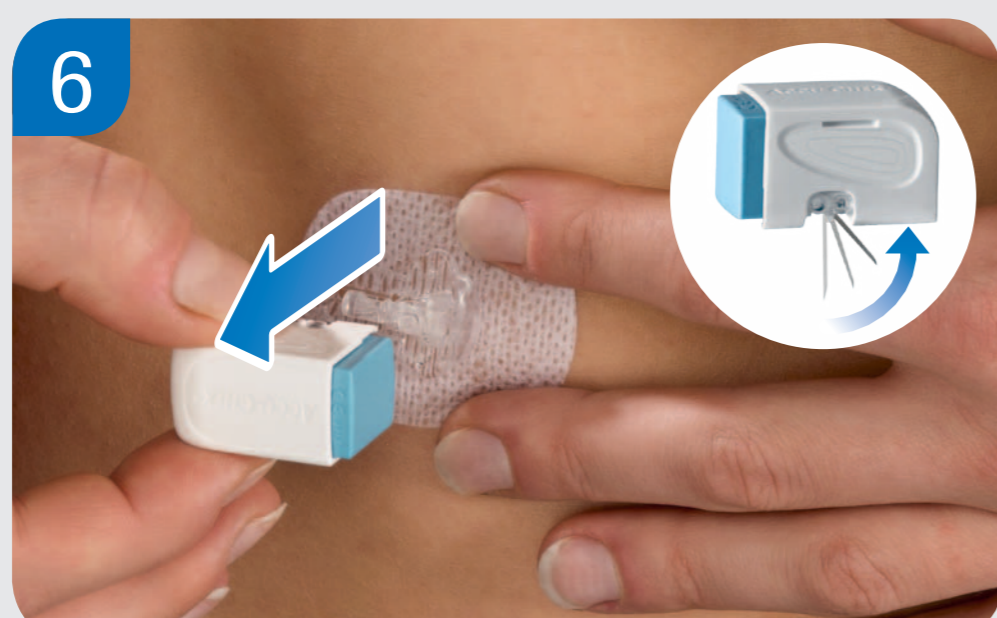
3 Push the button until it stops. The introducer needle with the soft cannula snaps out.



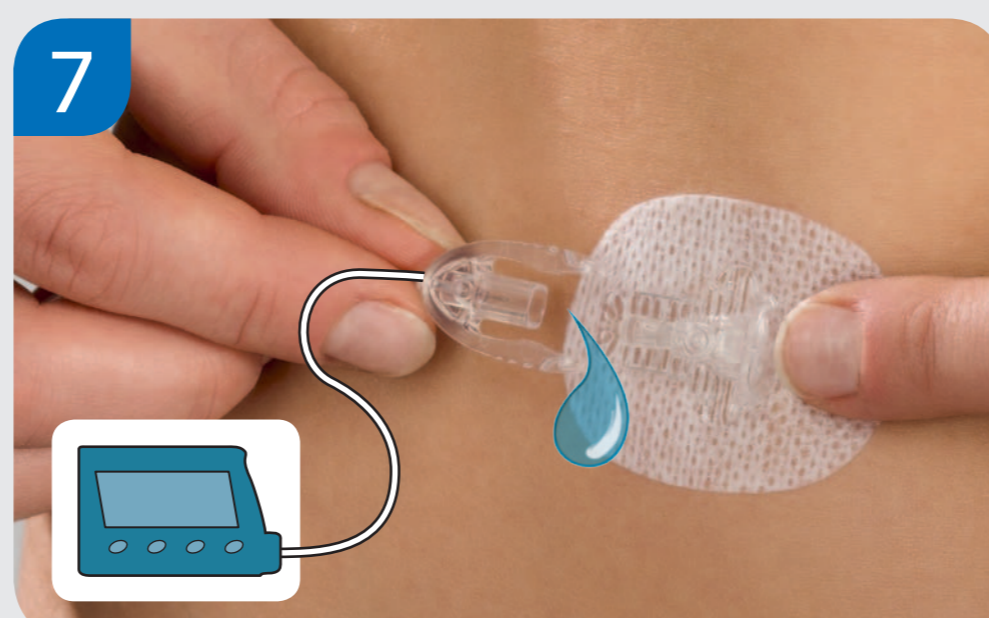
4 Insert the infusion set at a 90° angle. Choose an infusion site away from your waistline, bones, any scar tissue, belly button and recent infusion sites.



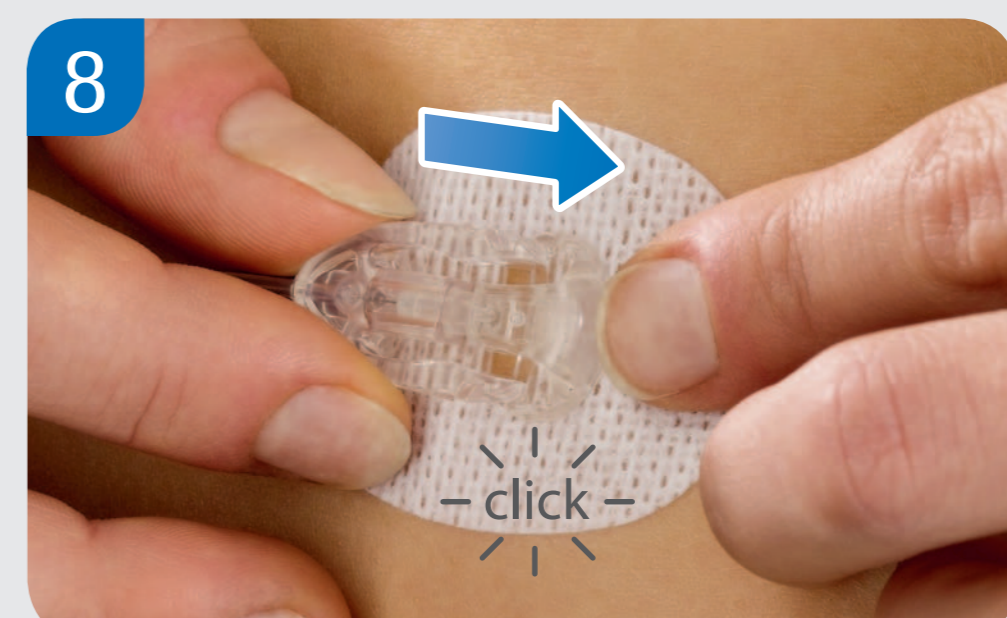
5 Press the adhesive plaster firmly onto the infusion site, ensuring that it makes good contact with the skin.



6 Remove the needle box with the introducer needle, leaving the adhesive plaster and the connector plate in place. The introducer needle snaps back into the needle box automatically.



7 Attach the transfer set to the insulin pump and prime it according to the instructions provided with the insulin pump. Make sure it is free from air bubbles.



8 Connect the primed transfer set to the connector plate. Before resuming insulin pump therapy, fill the head set and the soft cannula with 0.7 U of insulin.

Soft cannula	Length:	6 mm	8 mm	10 mm
	Prime volume:	0,7 U*	0,7 U*	0,7 U*
Tubing	Length:	40 cm 16 inches	70 cm 28 inches	100 cm 39 inches
	Prime volume:	7 U*	11 U*	15 U*
				* U 100 insulin

For detailed instructions and important safety information, please consult the instruction accompanying this product.

Experience what's possible.

ACCU-CHEK and ACCU-CHEK INSIGHT are trademarks of Roche.
© 2012 Roche Diagnostics



www.accu-chek.com
Roche Diagnostics GmbH
Sandhofer Strasse 116
68305 Mannheim, Germany

ACCU-CHEK®