



Accu-Chek® LinkAssist Plus Training Chart

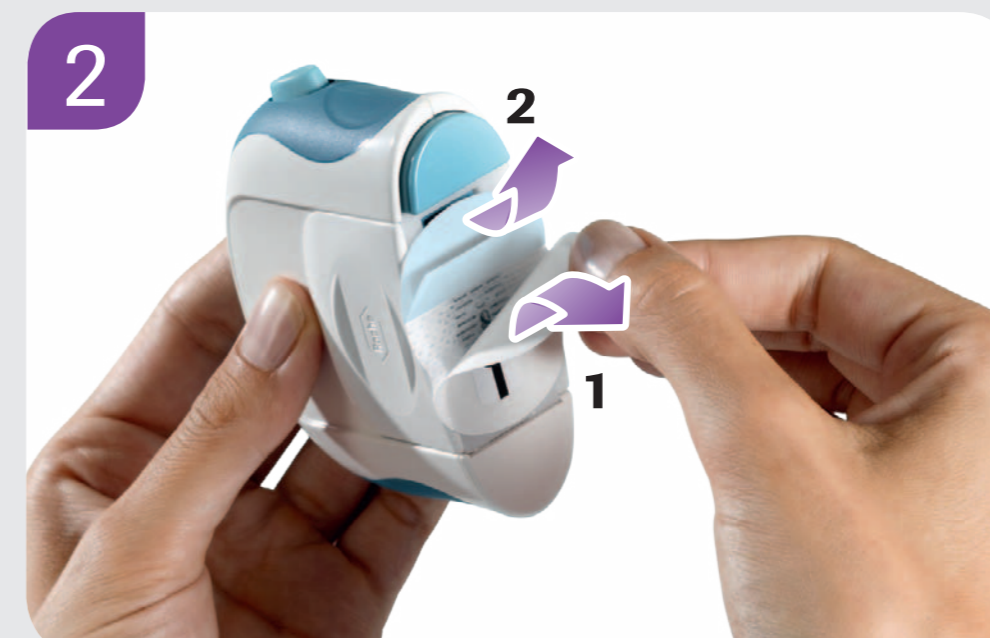
Use the Accu-Chek LinkAssist Plus insertion device to insert your Accu-Chek FlexLink Plus/ Accu-Chek Insight Flex infusion set easily and virtually pain-free even at hard to reach infusion sites.



A Release button **C** Loading chamber
B Safety release **D** Slider



1 Before unpacking your infusion set, wash your hands thoroughly. Insert the head set into the insertion device, with the coloured part of the adhesive backing paper pointing towards the safety release.



2 Peel both parts of the adhesive backing paper away from the adhesive plaster.



3 Hold the slider on both sides and pull it back until it stops. The introducer needle with the soft cannula snaps out.
Tip: The ACCU-CHEK-labelled side must be pulled a little earlier.



4 Position the insertion device on your chosen infusion site. Press the insertion device against the skin, ensuring that the safety release is no longer visible.



5 Press the release button to insert the infusion set.



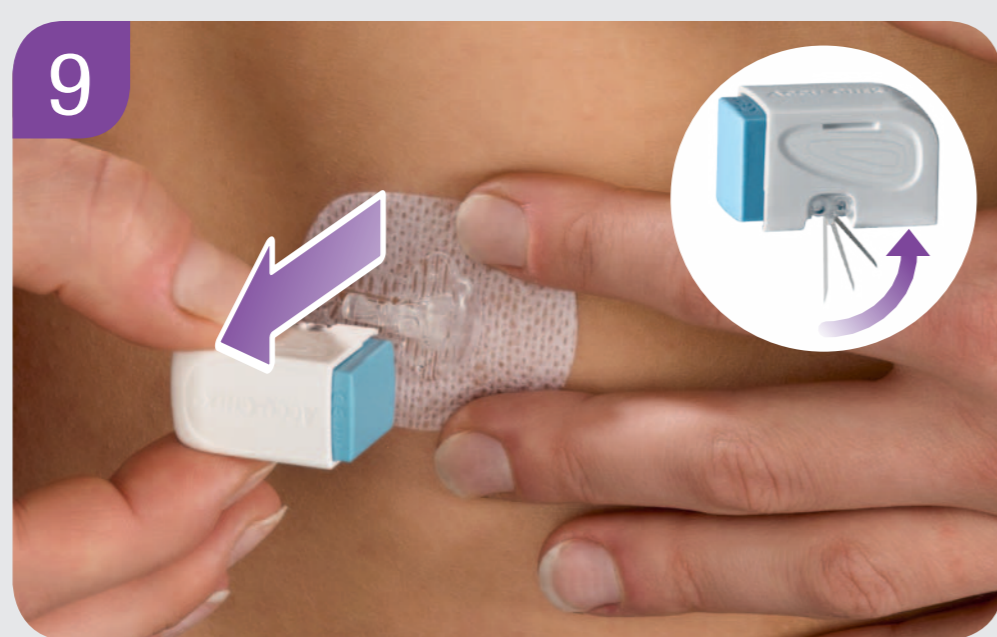
6 Remove the insertion device.



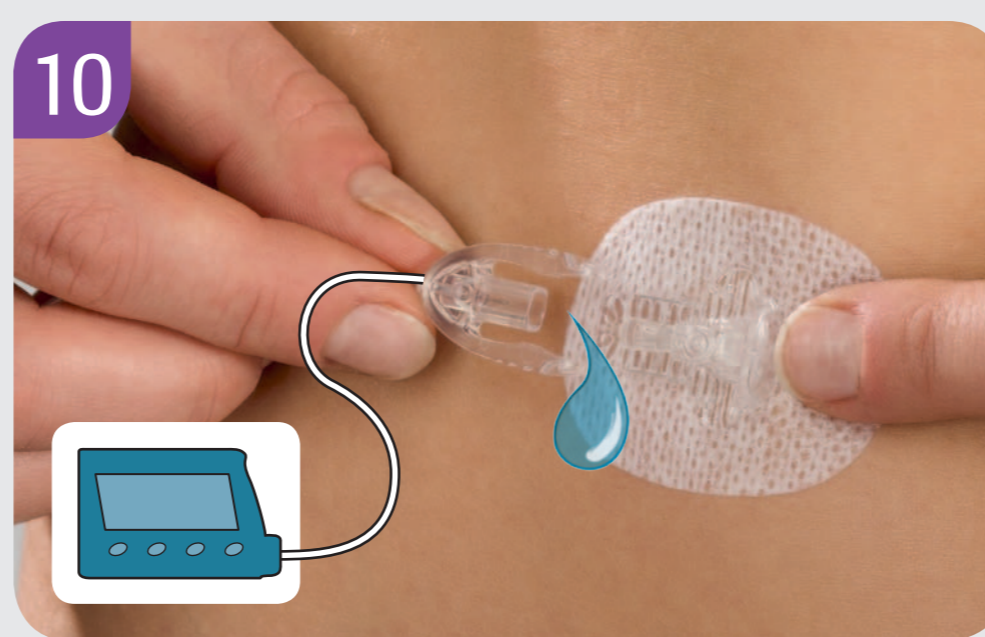
7 For storage pull the slider back to the starting position.



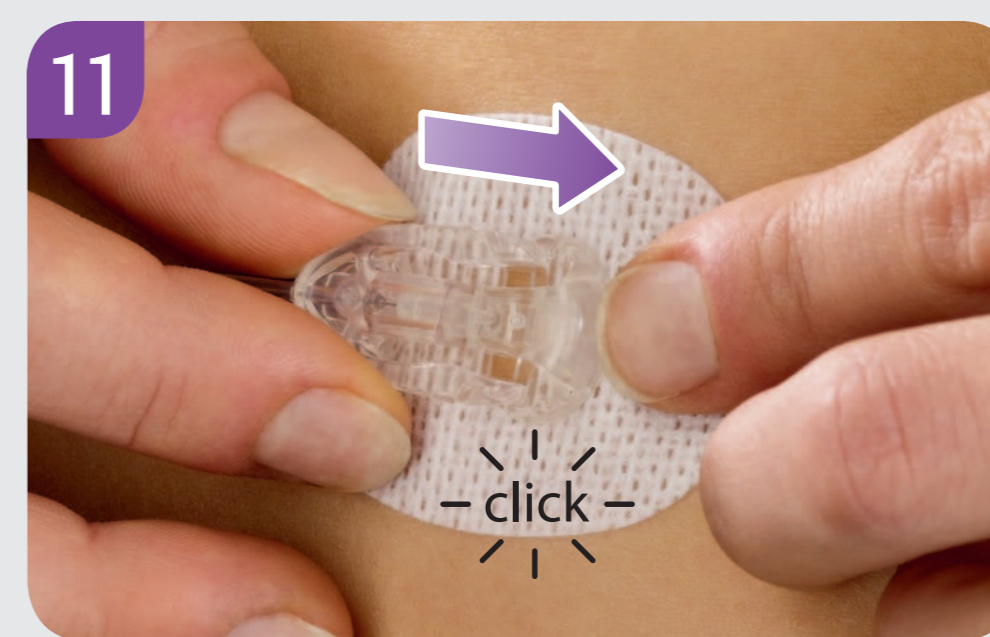
8 Press the adhesive plaster firmly onto the infusion site, ensuring that it makes good contact with the skin.



9 Remove the needle box with the introducer needle at a right angle, leaving the connector plate in place. The introducer needle snaps back into the needle box automatically.



10 Attach the transfer set to the insulin pump and prime it according to the instructions provided with the insulin pump. Make sure it is free from air bubbles.



11 Connect the primed transfer set to the connector plate. Before resuming insulin pump therapy, fill the head set and the soft cannula with 0.7 U of insulin.

For detailed instructions and important safety information, please consult the instruction accompanying this product and infusion set.

Experience what's possible.

ACCU-CHEK, ACCU-CHEK FLEXLINK, ACCU-CHEK LINKASSIST and ACCU-CHEK INSIGHT are trademarks of Roche.
© 2012 Roche Diagnostics



www.accu-chek.com
Roche Diagnostics GmbH
Sandhofer Strasse 116
68305 Mannheim, Germany

ACCU-CHEK®