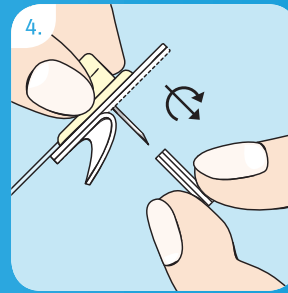
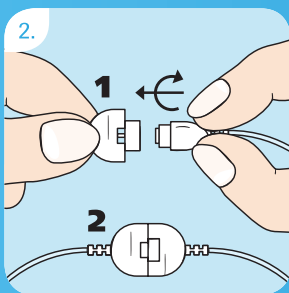


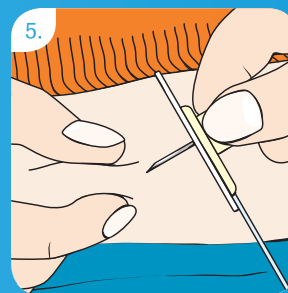
Choose a site away from the waistline, bones, scar tissue, belly button and recently used infusion sites.  
 1) Clean hands and 2) the site according to the instructions from your health care professional. Allow infusion site to dry before inserting the Accu-Chek® Rapid-D Link.



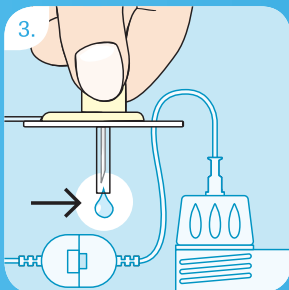
Hold the Accu-Chek Rapid-D Link with thumb and forefinger at the disc holder. With the other hand, remove the adhesive backing from the self-adhesive and twist the protective cover off the steel cannula.



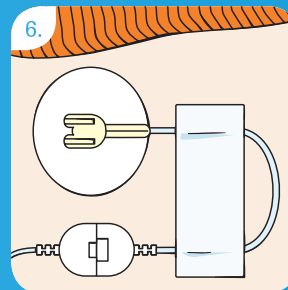
1) After removing the cannula and the transfer set from the sterile packaging hold the two halves so that they form a cross. Fit the parts directly into one another. 2) Connect them by turning one quarter of a turn in a clockwise direction until they click noticeably and audibly into place.



Pinch a bit of tissue together at the disinfected site. Insert the Accu-Chek Rapid-D Link perpendicular to the skin. Press the adhesive plaster firmly onto the infusion site, ensuring that it makes good contact with the skin. Bend the disc holder slightly sideways and remove it.



Screw the luer-lock firmly into the screw thread of the pump adapter. Fill the Accu-Chek Rapid-D Link according to the pump manufacturer's operating instructions until the medication emerges at the tip of the steel cannula. Do not leave air bubbles in the cartridge or in the tubing of the Accu-Chek Rapid-D Link.



Form a loop to relieve stress and secure it into place with a strip of adhesive plaster. Start distribution through the pump.

Please refer to the Instructions for Use of the Accu-Chek Rapid-D Link for detailed information.

**Experience what's possible.**

ACCU-CHEK and ACCU-CHEK RAPID-D LINK are trademarks of Roche.  
 © 2010 Roche

[www.accu-chek.com](http://www.accu-chek.com)  
 Roche Diabetes Care AG  
 3401 Burgdorf, Switzerland



**ACCU-CHEK®**