

Accu-Chek® FastClix

Quick Reference Guide



WARNING

This Quick Start Guide does not replace the User's Manual for your Accu-Chek FastClix lanceting device. The User's Manual contains important handling instructions and additional information.



WARNING

The Accu-Chek FastClix lanceting device is intended for patient self-monitoring by an individual person only. It must not be used to collect blood from more than one person as it does not incorporate any features to guard against cross-infection.

Overview



The simple handling steps

Preparing for lancing

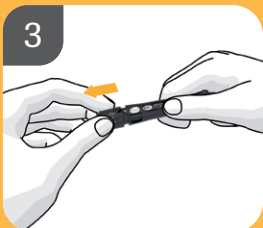


Wash your hands

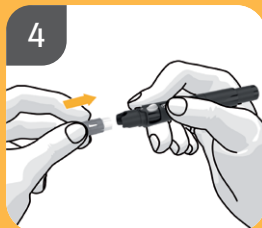


Select from 11 depth settings

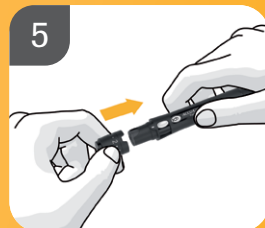
Inserting a drum



Remove cap



Insert lancet drum

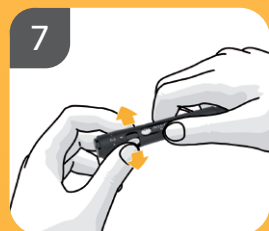


Replace cap

Obtaining a blood sample



Prick and release in 1-Click action



Slide lever back and forth to change to a new lancet.

Changing lancets



Unused drum



Used drum

Use all 6 lancets before removing the drum. The drum cannot be reinserted for hygienic reasons.

Experience 1-Click lancing. Your fingertips will thank you.

If you need any more help or information please contact your Roche representative.

© 2020 Roche Diabetes Care Limited. All rights reserved.

ACCU-CHEK and FASTCLIX are trademarks of Roche.

All other trademarks are the property of their respective owners.

Roche Diabetes Care Limited, Charles Avenue, Burgess Hill, RH15 9RY, UK.

Company registration number: 9055599

www.accu-chek.co.uk www.accu-chek.ie

ACCU-CHEK®